

AI زراعة الذكاء

Empowering Farmers with Next-Gen Solutions.

Powered by
Seerab Technologies



The Problem

Smart Farming, Better Harvests

On one side, we see the Saudi government proudly celebrating Vision 2030, a big step towards achieving goals like food security and better livelihoods for their people. But on the other side, there's a worried Arab farmer, standing on his dry, barren land. He wonders, "Will the water I use make a difference, or will it go to waste?"

His concerns don't stop at water. He's also struggling with unhealthy crops, low yields, and no reliable way to make better decisions for the future.

This is the challenge we are here to address—balancing ambitious desires with on-ground realities. At Zarat-uz-Zaka AI, we aim to bridge this gap by empowering farmers and decision-makers alike.

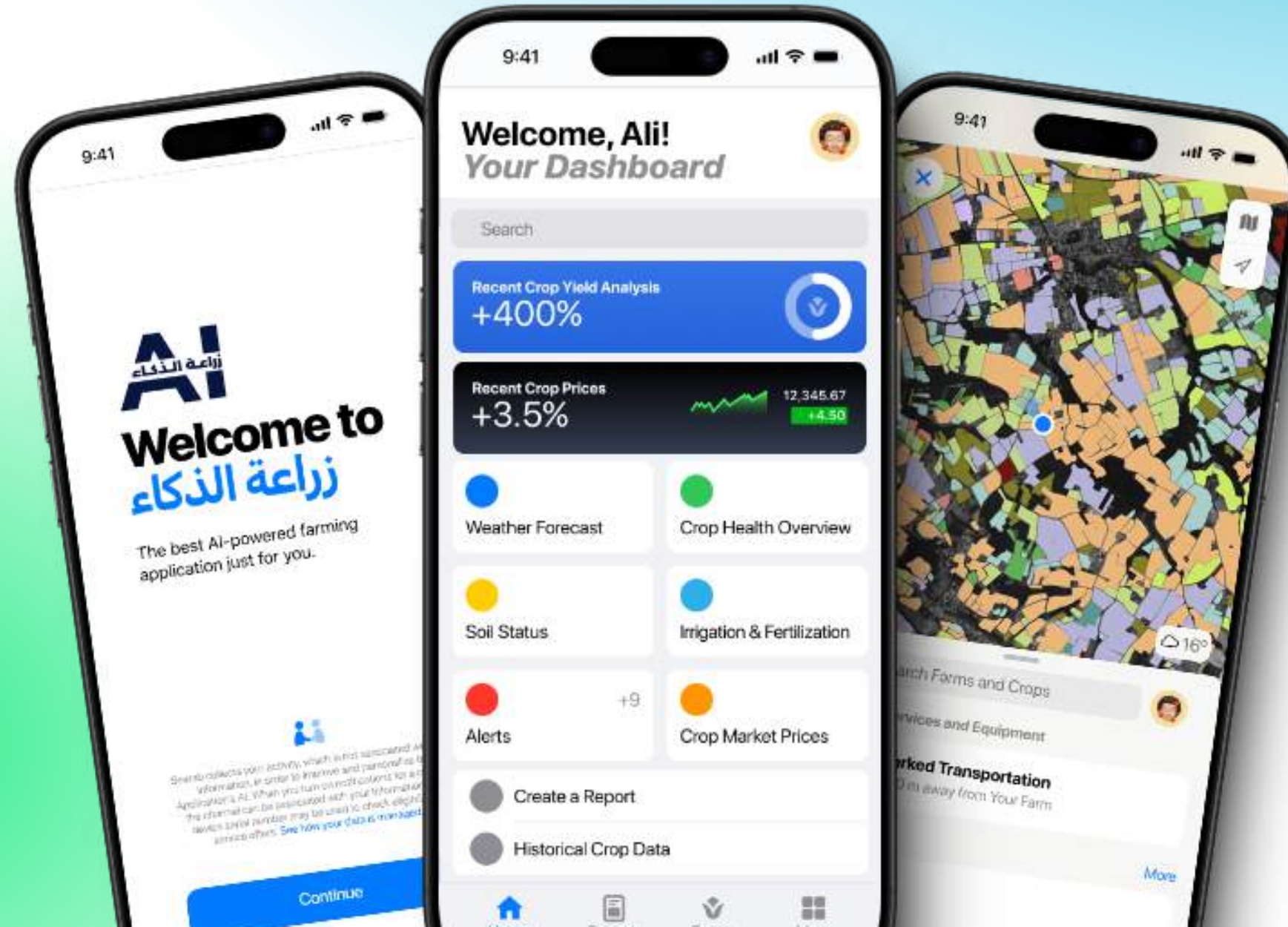




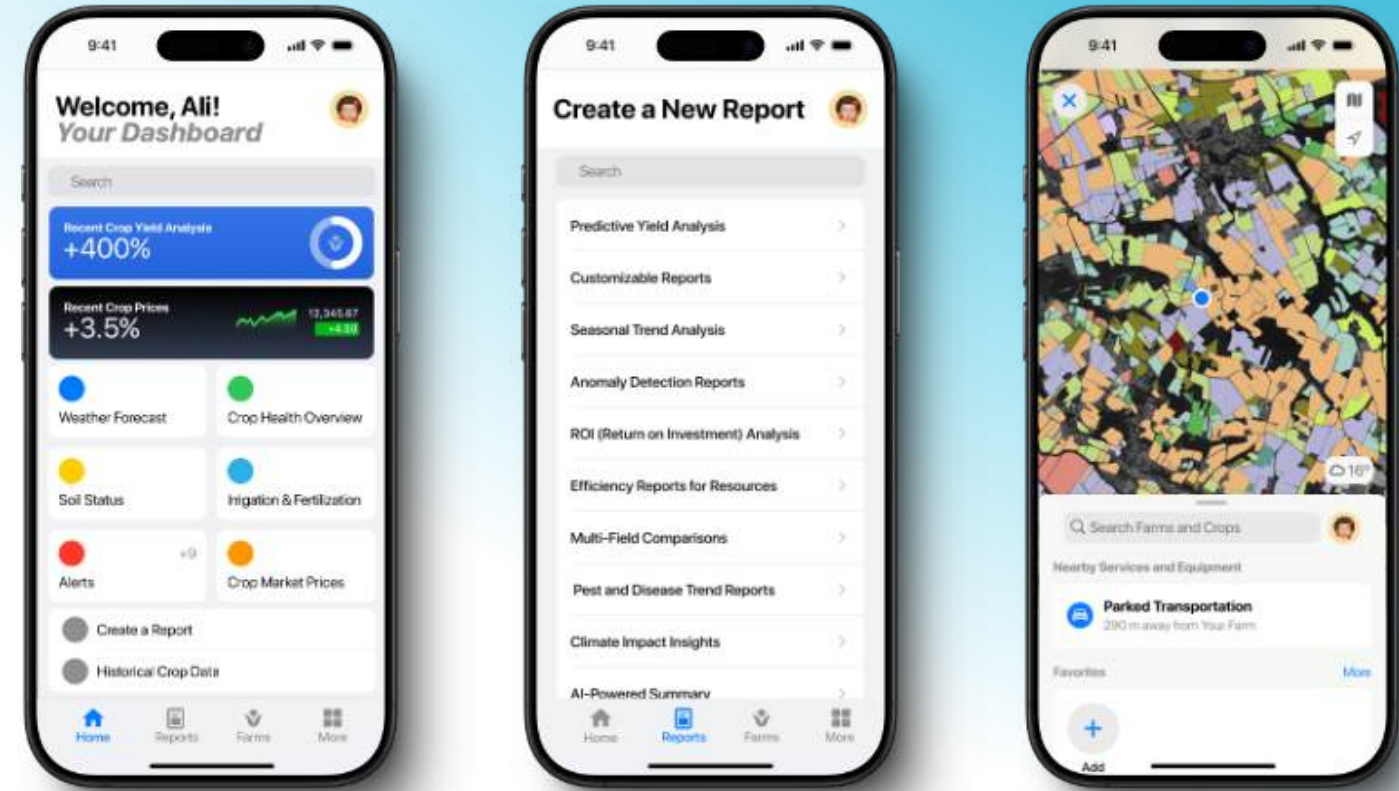
Because every great vision needs the right tools to succeed

Our Solution

زراعة الذكاء AI utilizes advanced geospatial technologies and artificial intelligence to deliver actionable insights, enabling farmers to optimize their farming practices efficiently.



Key Features



Mapping

Utilize satellite imagery and drone technology to create detailed maps of farms, enabling farmers to visualize their entire land from a bird's eye view

AI Analytics

Advanced algorithms analyze farm data to identify trends, predict crop performance, and detect anomalies, empowering farmers to make informed decisions

Yield Optimization

Optimize crop yields by monitoring soil health, managing water levels, and implementing precision agriculture techniques tailored to each plot of land

Crop Monitoring

Real-time monitoring of crop health and growth stages allows for early detection of issues and proactive interventions to prevent yield losses

Water Management

Efficiently manage water resources by precisely controlling irrigation, reducing waste, and ensuring optimal hydration for crops

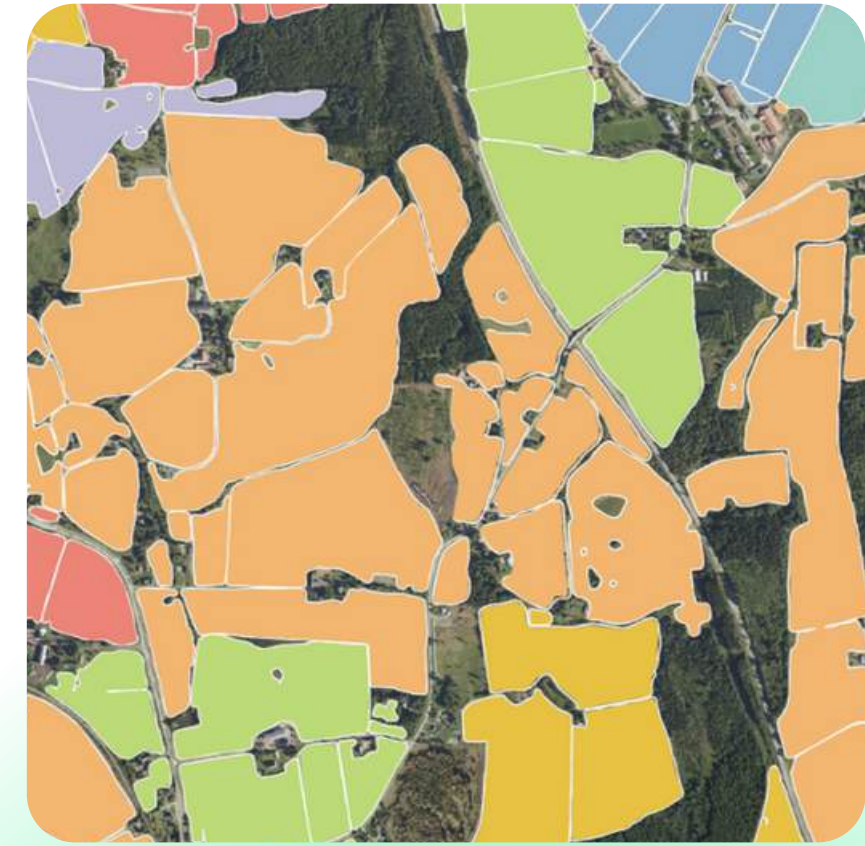




We don't just monitor crops; we nurture livelihoods and secure futures

Value Proposition

- **Resource Efficiency:** By optimizing irrigation, fertilization, and pest control, our solution helps farmers reduce resource waste, thereby lowering costs and enhancing sustainability.
- **Increased Yields:** Advanced data analytics and real-time insights enable farmers to make informed decisions, leading to higher crop yields.
- **Scalability:** Our tiered plans ensure that farms of all sizes can benefit from our technology, promoting widespread adoption and impact.
- **Customization:** Offering tailored solutions and premium services that cater to the specific needs of different types of farmers and agricultural businesses



Target Market



Target Market

1. Saudi Arabia:

- **Farmers and Agribusinesses:**

- **Small Farms (<20 hectares 49 acres approx):** Predominantly family-run farms that require cost-effective solutions to improve productivity and sustainability.
- **Medium Farms (20-100 hectares 49-247 acres approx):** Larger family or community farms that are open to adopting new technologies for better resource management and yield improvement.
- **Large Farms (>100 hectares 247 acres & above):** Corporate and commercial farms with substantial resources to invest in advanced Agritech solutions for large-scale operations.

- **Government & Policy Makers:**

- The Saudi government is heavily invested in modernizing agriculture as part of Vision 2030, which aims to diversify the economy and reduce dependence on oil by enhancing local food production and sustainability.

- **Agricultural Cooperatives and Associations:**

- Organizations that represent groups of farmers, providing an opportunity to deploy solutions at scale through partnerships.

Market Size and Opportunity



TAM, SAM, SOM



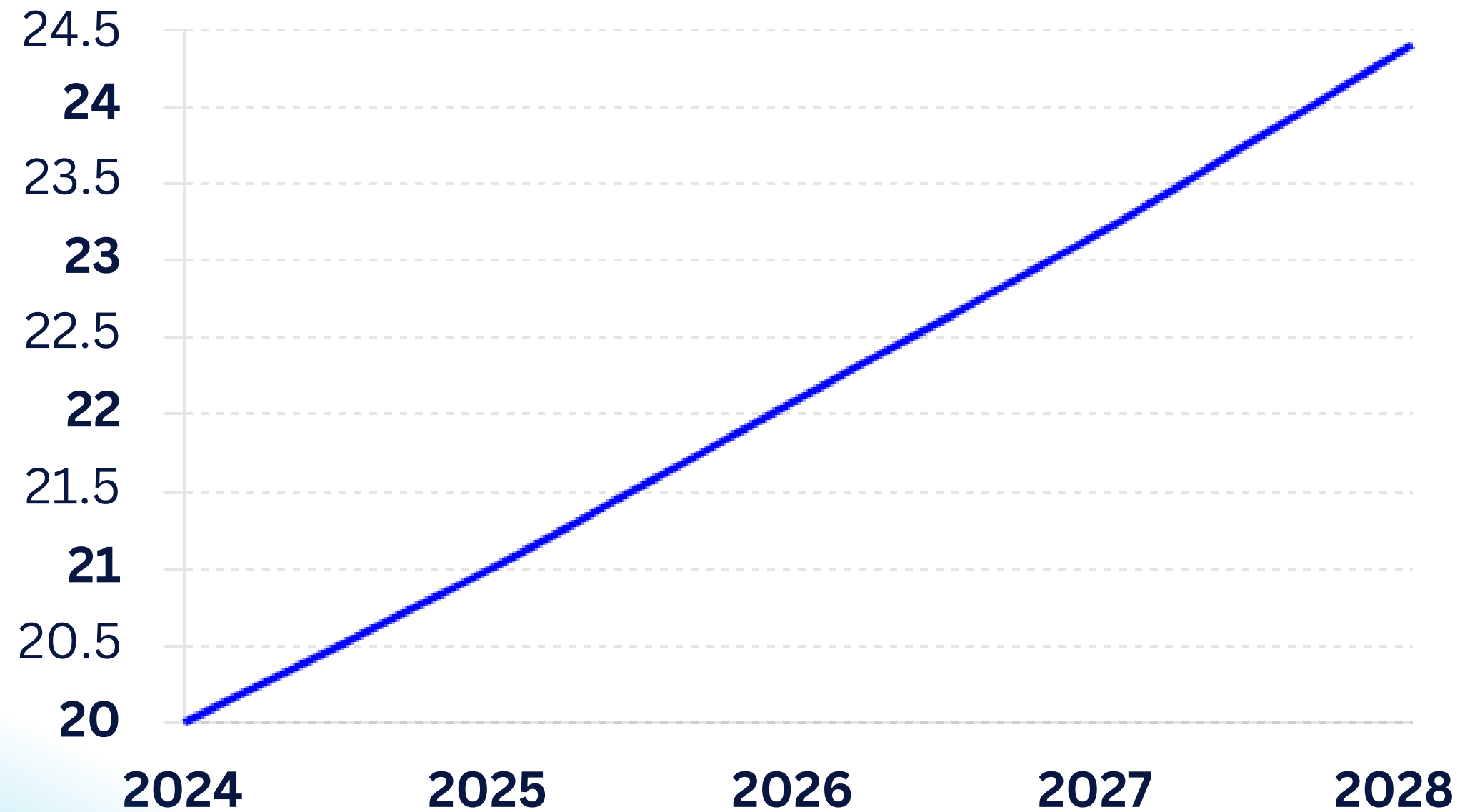
Size of Market

1. Saudi Arabia:

- The agricultural sector in Saudi Arabia is valued at approximately \$20 billion and is expected to grow at a CAGR of 5% over the next five years, driven by government initiatives and technological adoption.
- The government's Vision 2030 initiative allocates significant funding for agricultural innovation, creating substantial demand for advanced agritech solutions.

Market Opportunity in KSA

The graph illustrates the agricultural market opportunity in Saudi Arabia from 2024 to 2028. The market is projected to grow from \$20 billion in 2024 to approximately \$24.4 billion in 2028, reflecting a 5% CAGR. This visualization helps underscore the significant growth potential in the sector.



Competitor Analysis

Direct

SPACE
GUARDIAN

Agri
Edge

FARMT
TOPIA

FARMIN

palmear

in-Direct

RED SEA
FARMS

ادامة
EDAMA

Nabt

Mishkat
Agritech Farms

ixris



Business Model



Business Model for AI Zira'at Al-Dhikaa

Subscription Based Model with tiered plans:

Small Farms Plan

- **Target Audience:** Farms less than 20 hectares (50 acres)
- **Price:** 5,625 SAR per year
- **Features:**
 - Access to basic satellite imagery
 - Simple crop health monitoring
 - bi-Monthly summary reports
 - Basic customer support via email

Medium Farms Plan

- **Target Audience:** Farms between 20 to 100 hectares (50 to 250 acres)
- **Price:** 11,250 SAR per year
- **Features:**
 - All features of Small Farms Plan
 - Detailed soil & nutrient analysis recommendations*
 - tri-Monthly reports
 - Priority customer support via email and chat

Large Farms Plan

- **Target Audience:** Farms over 100 hectares (250 acres)
- **Price:** 18,750 SAR per year
- **Features:**
 - All features of the Medium Farms Plan
 - High-resolution satellite imagery with continual updates
 - Predictive analytics for yield forecasting
 - 24/7 dedicated customer support via phone

Business Model for **AI زراعة الذكاء**

Subscription Based:

Enterprise

- **Target Audience:** Large Enterprise - Agribusinesses
- **Price:** Custom SAR per year
- **Features:**
 - Custom package - speak to our team

Government

- **Target Audience:** Govt backed Agri setups, businesses, corporations
- **Price:** Custom SAR per year
- **Features:**
 - Custom based package - pricing will be shared after need analysis

Financial Projection

- **Year 1-2:** Focus on acquiring 1,000 farms in Saudi Arabia, generating an annual revenue of \$8 million.
- **Year 3-5:** Expansion across the GCC region, targeting a total revenue of \$15 million by the fifth year.



Our Team



Farhat Bashir
Founder - CEO
Pakistan



Zulkifil Ahmad
Cofounder - CTO
Pakistan



Waqas Arshad
CMO
KSA



Neil
Advisor
Norway



Umair Nasim
COO
KSA



Azhar Bashir
Advisor
KSA



Seerab Technologies

Geospatial Solutions for People

Geospatial | PropTech | TourismTech | AgriTech | Satellite Imagery

Products/Services :

Seerab Maps - Best innovation in Real Estate

Seerab Umrah Hajj Maps - Best Community Service

Zarat-Uz-Zaka AI - AI in action at Agri-lands

Digital Twin - Beyond Virtual

Seerab Technologies - Geospatial Consultancy

 [linkedin.com/company/seerab-technologies](https://www.linkedin.com/company/seerab-technologies)





Seerab Technologies

Geospatial Solutions for People

Geospatial | PropTech | TourismTech | AgriTech | Satellite Imagery



<https://www.seerab.com>



Office# 7, 2nd Floor, Mustafa Mansion, 1R Plaza, F-10 Markaz,
Islamabad, Pakistan



+92 332 470 0757



info@seerab.com



@SeerabTech



[linkedin.com/company/seerab-technologies](https://www.linkedin.com/company/seerab-technologies)

